

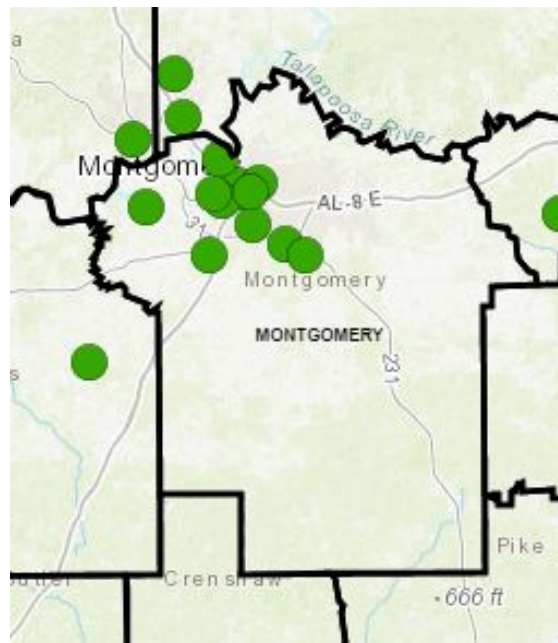
Opportunity Zones in Montgomery County

Opportunity Zones - An Overview

Background

- The Opportunity Zones tax incentive was established by Congress in the 2017 Tax Cut and Jobs Act.
- The program provides an Innovative approach to spur long-term private sector investments in low-income urban and rural communities nationwide. This economic development initiative is based on the bipartisan [Investing in Opportunities Act](#).
- It offers a frictionless way to **reinvest capital gains** into distressed communities through Opportunity Funds, in exchange for a graduated series of incentives tied to long-term holdings.
- This program is the first new national community investment program in over 15 years, and has the potential to be the largest economic development program in the U.S.

Opportunity Zones in Montgomery County



The following census tracts were identified by Governor Kay Ivey as Opportunity Zones in Montgomery County

01101000100	01101000600	01101002900
01101000200	01101001000	01101005603
01101000300	01101001100	01101005902
01101000500	01101002100	01101006000

Census Tract 01101000100

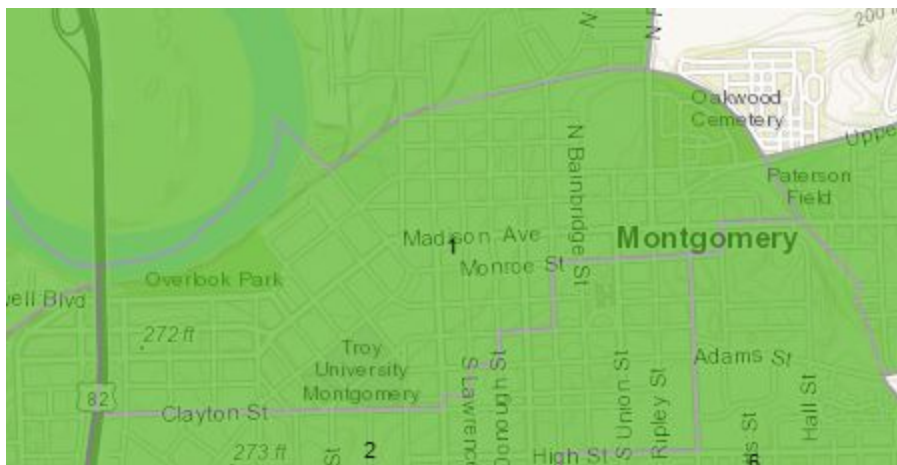
Area: North of I-85 and East of I-65 near the Civil Rights Memorial Center (Note: 1 on map below)

Total Population: 1,174 (-29.4%)

Total Housing Units: 565 (-24.3%)

Median Age: 31.3

More Data: <http://www.usboundary.com/Areas/432686>



Census Tract 01101000200

Area: East of I-65, including the First White House of the Confederacy (Note: 2 on map below)

Total Population: 1,605 (-21.9%)

Total Housing Units: 590 (-40.3%)

Median Age: 42

More Data: <http://www.usboundary.com/Areas/432368>



Census Tract 01101000300

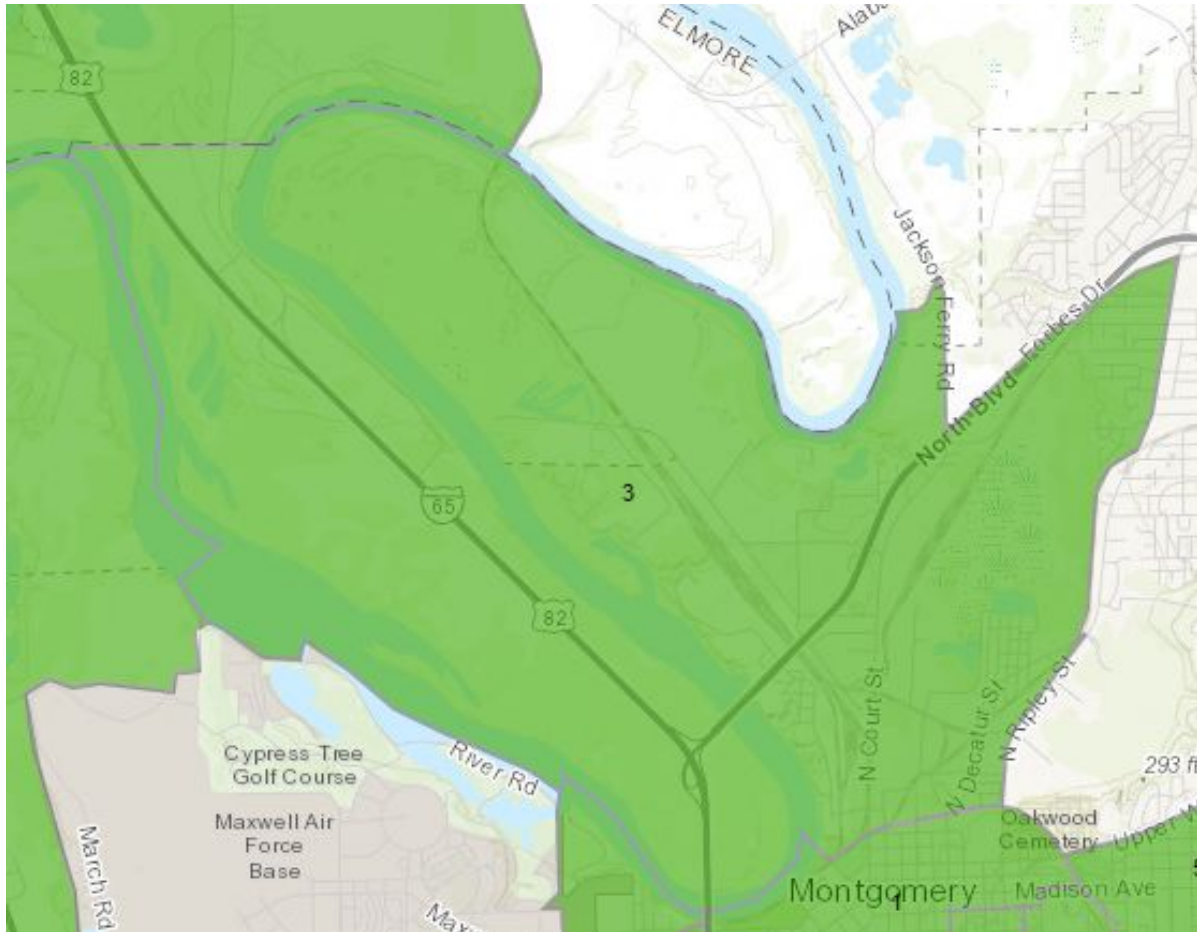
Area: I-65 North of downtown, 152 near the zoo (Note: 3 on map below)

Total Population: 1,666 (-16.1%)

Total Housing Units: 818 (-9.2%)

Median Age: 33.3

More Data: <http://www.usboundary.com/Areas/432693>



Census Tract 01101000500

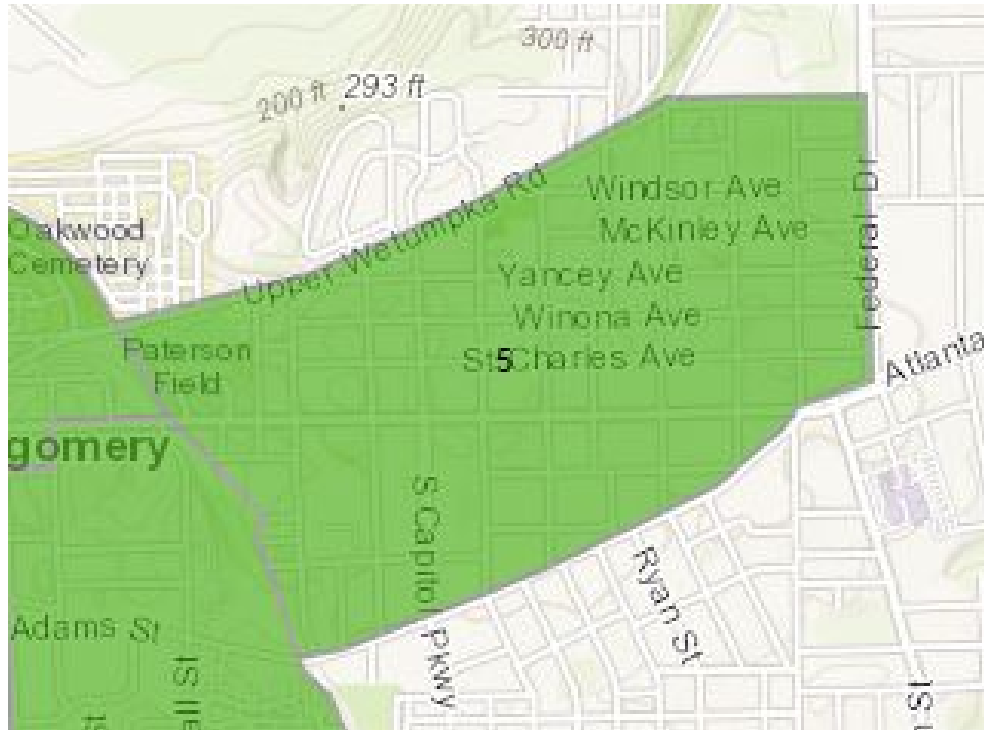
Area: Capitol Heights (Note: 5 on map below)

Total Population: 3,656 (25.6%)

Total Housing Units: 1,719 (1.8%)

Median Age: 29.3

More Data: <http://www.usboundary.com/Areas/432631>



Census Tract 01101001000

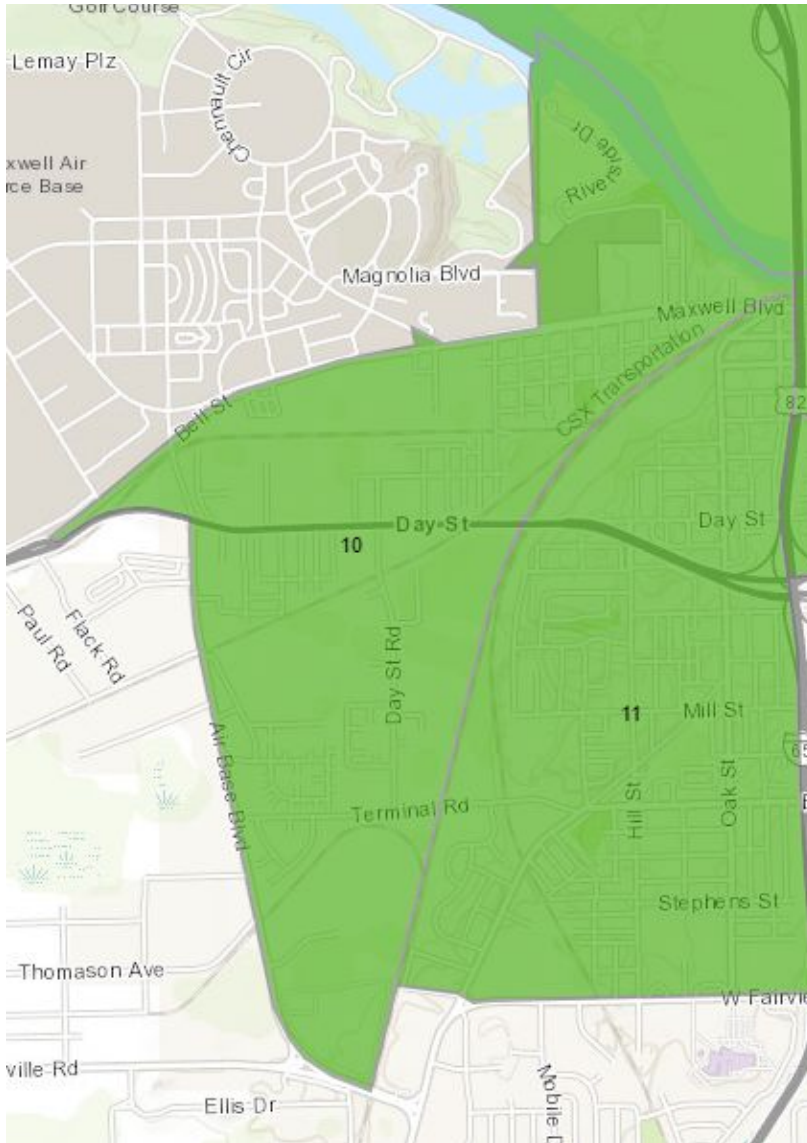
Area: West End (Note: 10 on map below)

Total Population: 1,369 (-66.0%)

Total Housing Units: 850 (-53.5%)

Median Age: 28.9

More Data: <http://www.usboundary.com/Areas/432690>



Census Tract 01101000600

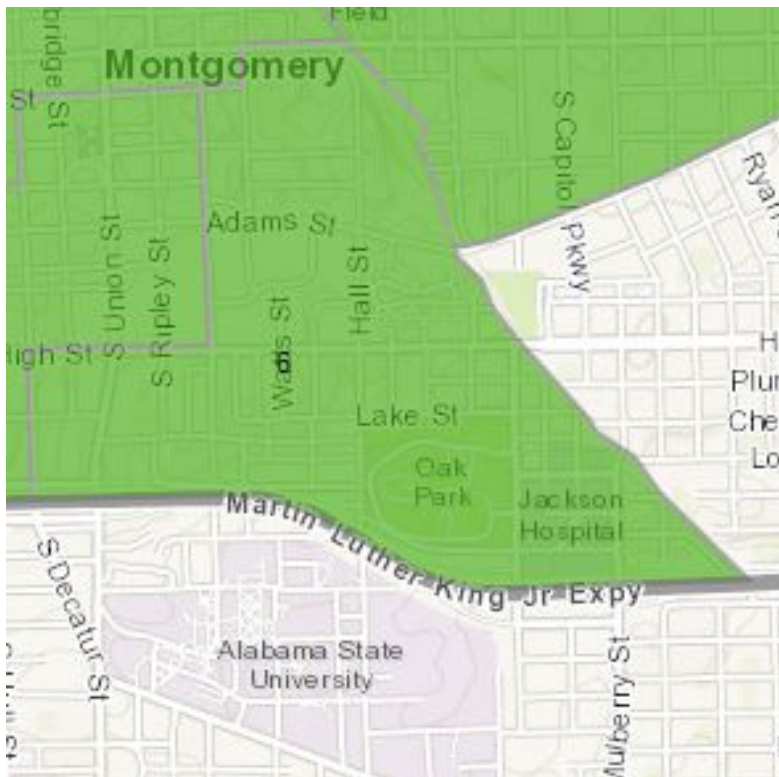
Area: Oak Park and Jackson Hospital (Note: 6 on map below)

Total Population: 1,148 (-53.7%)

Total Housing Units: 665 (-44.4%)

Median Age: 40.9

More Data: <http://www.usboundary.com/Areas/432679>



Census Tract 01101001100

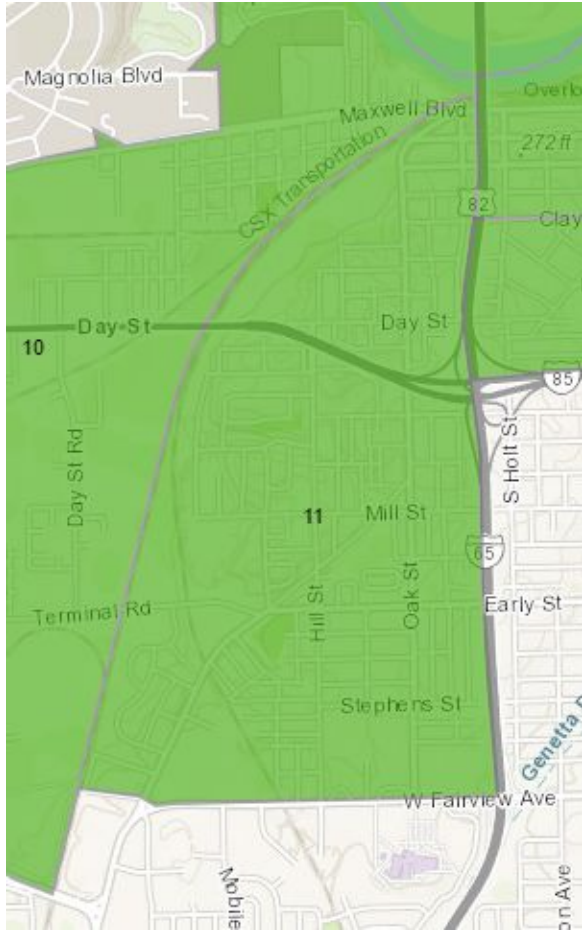
Area: Western Hills (Note: 11 on map below)

Total Population: 3,569 (-13.3%)

Total Housing Units: 1,802 (-19.7%)

Median Age: 37.5

More Data: <http://www.usboundary.com/Areas/432687>



Census Tract 01101002100

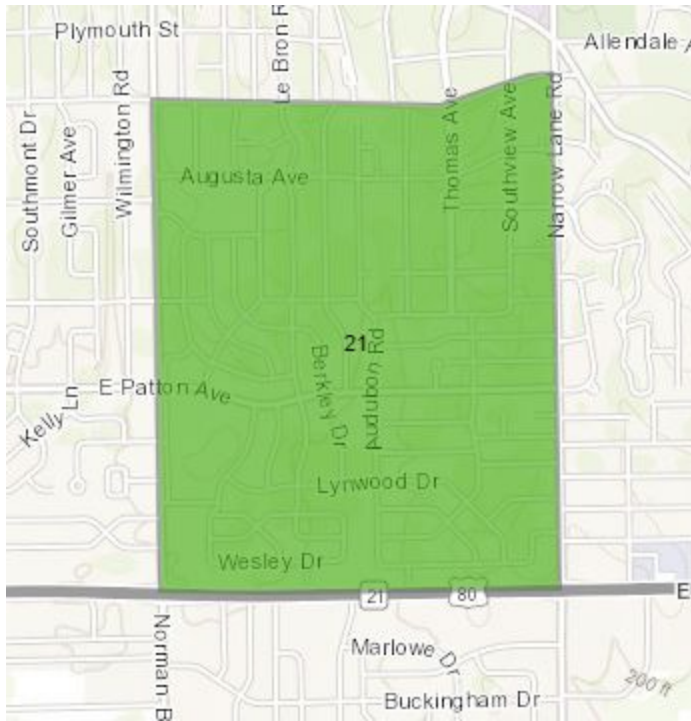
Area: Edgewood

Total Population: 4,091 (+.66%)

Total Housing Units: 1,641 (+0.0%)

Median Age: 33.9

More Data: <http://www.usboundary.com/Areas/432612>



Census Tract 01101002900

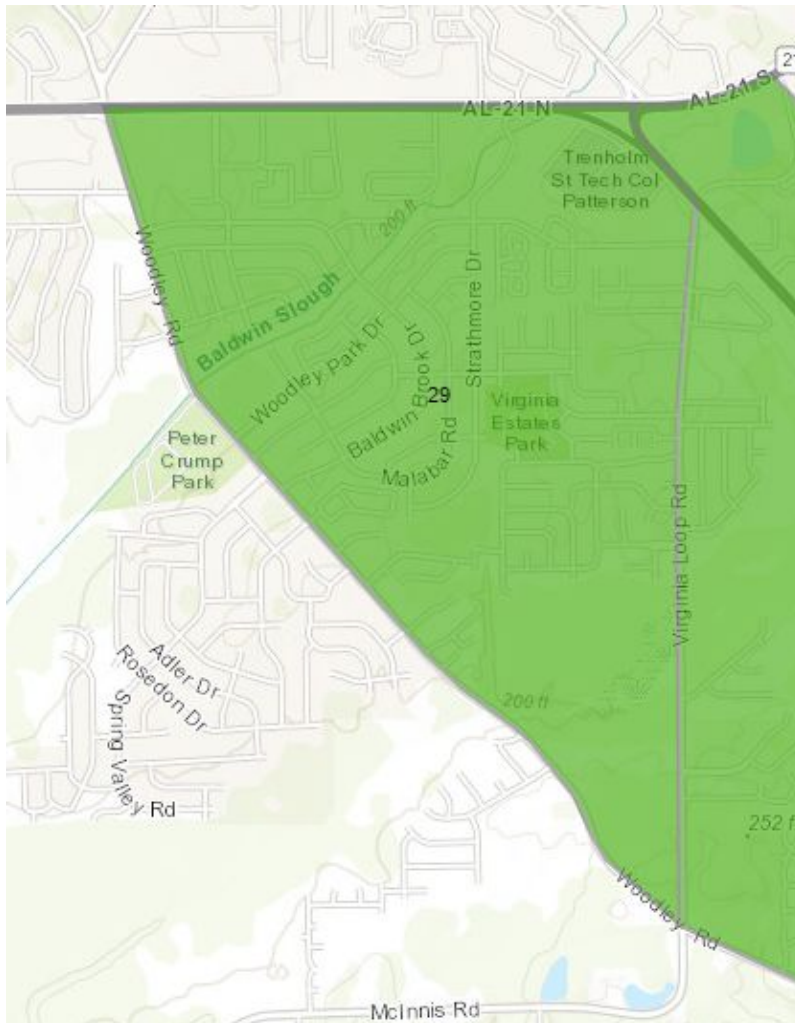
Area: Woodley Park (Note: 29 on map below)

Total Population: 8,217 (+3.6%)

Total Housing Units: 3,415 (+7.2%)

Median Age: 28.2

More Data: <http://www.usboundary.com/Areas/432634>



Census Tract 01101005603

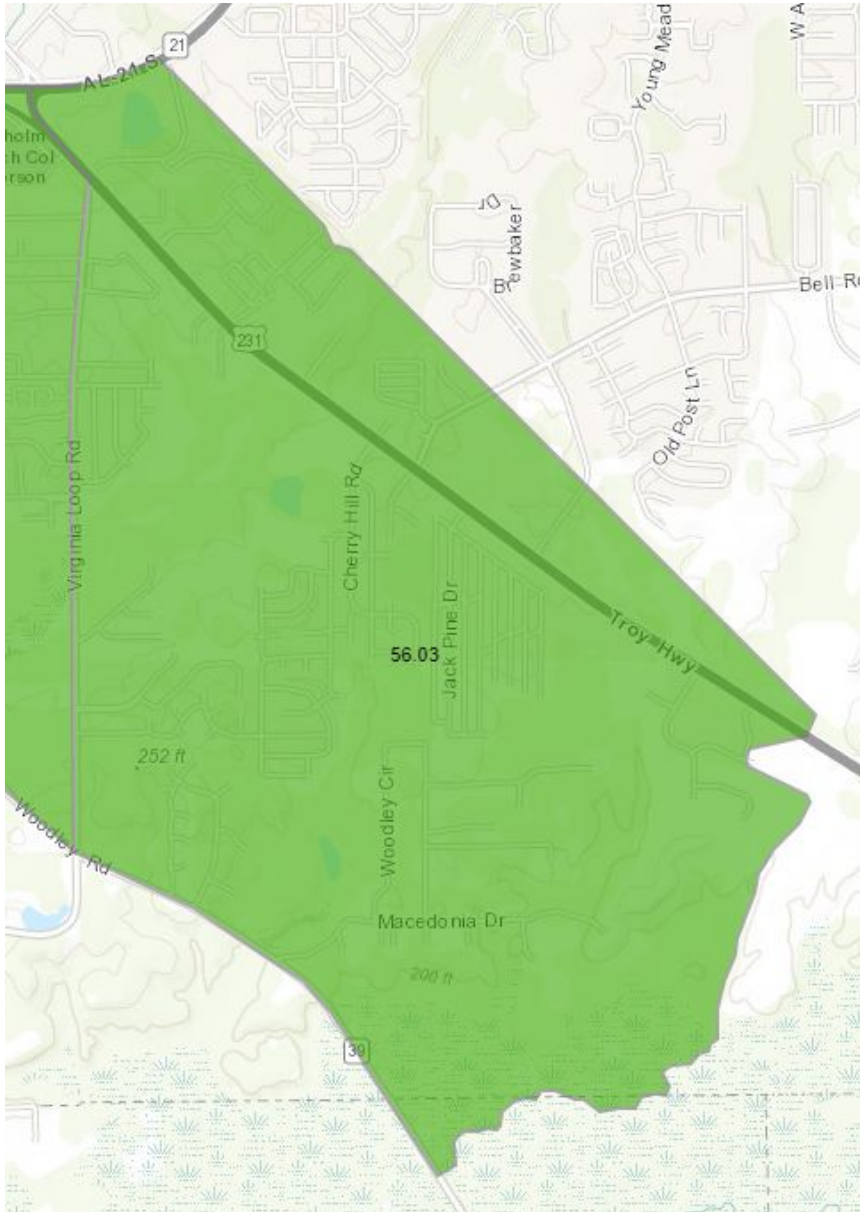
Area: Woodland Hills (Note: 56.03 on map below)

Total Population: 7,828 (+9.5%)

Total Housing Units: 3,085 (+1.1%)

Median Age: 25.3

More Data: <http://www.usboundary.com/Areas/432692>



Census Tract 01101005902

Area: Windwood (Note: 59.02 on map below)

Total Population: 3,762 (-5.4%)

Total Housing Units: 1,501 (+4.3%)

Median Age: 36.6

More Data: <http://www.usboundary.com/Areas/432681>



Census Tract 01101006000

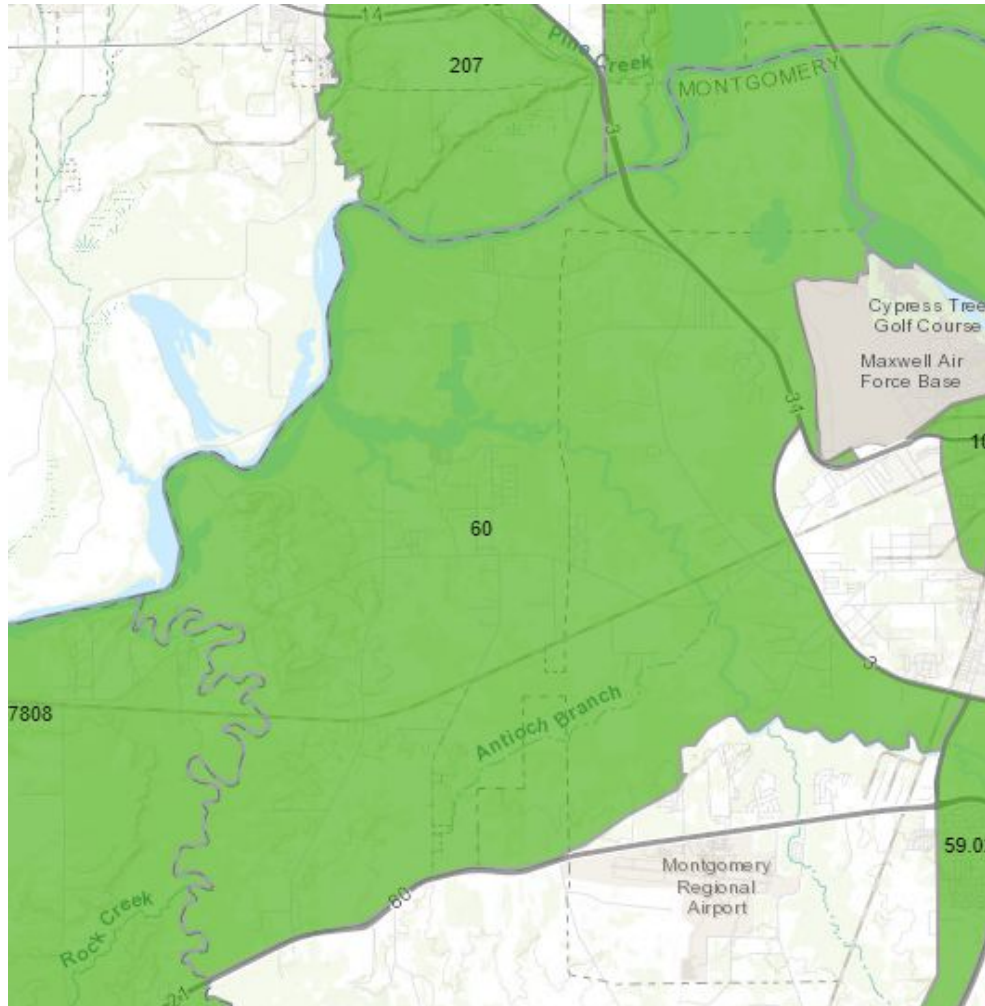
Area: West of Maxwell AFB, north of airport (Note: 60 on map below)

Total Population: 3,611(-19.1%)

Total Housing Units: 1,682 (-17.9%)

Median Age: 41.4

More Data: <http://www.usboundary.com/Areas/432696>





Why Now?

- More than half of America's most economically distressed communities contained both [fewer jobs and businesses in 2015 than they did in 2000](#).
- New business formation is near a record low. The average distressed community saw a [6 percent decline](#) in local businesses during the prime years of the national economic recovery.
- The U.S. economy is increasingly dependent on a handful of places for growth. [Five metro areas](#) produced as many new businesses as the rest of the country combined from 2010 – 2014. (Economic Innovation Group)

“Too many American communities have been left behind by widening geographic disparities and increasingly uneven economic growth. We come from different parties and regions, but share the common conviction that all Americans should have access to economic opportunity [regardless of their zip code](#).”

Joint Statement from Senator Scott, Senator Booker, Congressman Tiberi, and Congressman Kind, February 2, 2017