



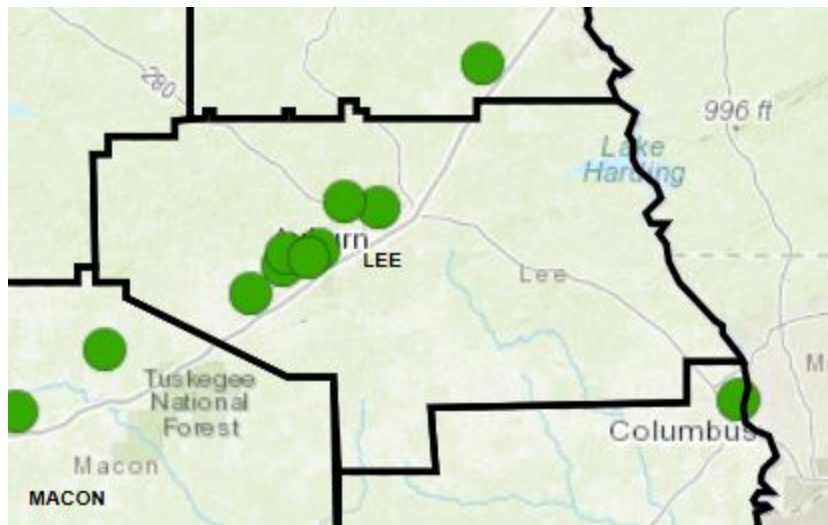
## Opportunity Zones in Lee County

### Opportunity Zones - An Overview

#### Background

- The Opportunity Zones tax incentive was established by Congress in the 2017 Tax Cut and Jobs Act.
- The program provides an Innovative approach to spur long-term private sector investments in low-income urban and rural communities nationwide. This economic development initiative is based on the bipartisan [Investing in Opportunities Act](#).
- It offers a frictionless way to **reinvest capital gains** into distressed communities through Opportunity Funds, in exchange for a graduated series of incentives tied to long-term holdings.
- This program is the first new national community investment program in over 15 years, and has the potential to be the largest economic development program in the U.S.

### Opportunity Zones in Lee County





The following census tracts were identified by Governor Kay Ivey as Opportunity Zones in Lee County

01081040200	01081040300	01081040604	01081040700
01081040800	01081041100	01081041300	

**Census Tract 01081040200** (Note: 402 on map below)

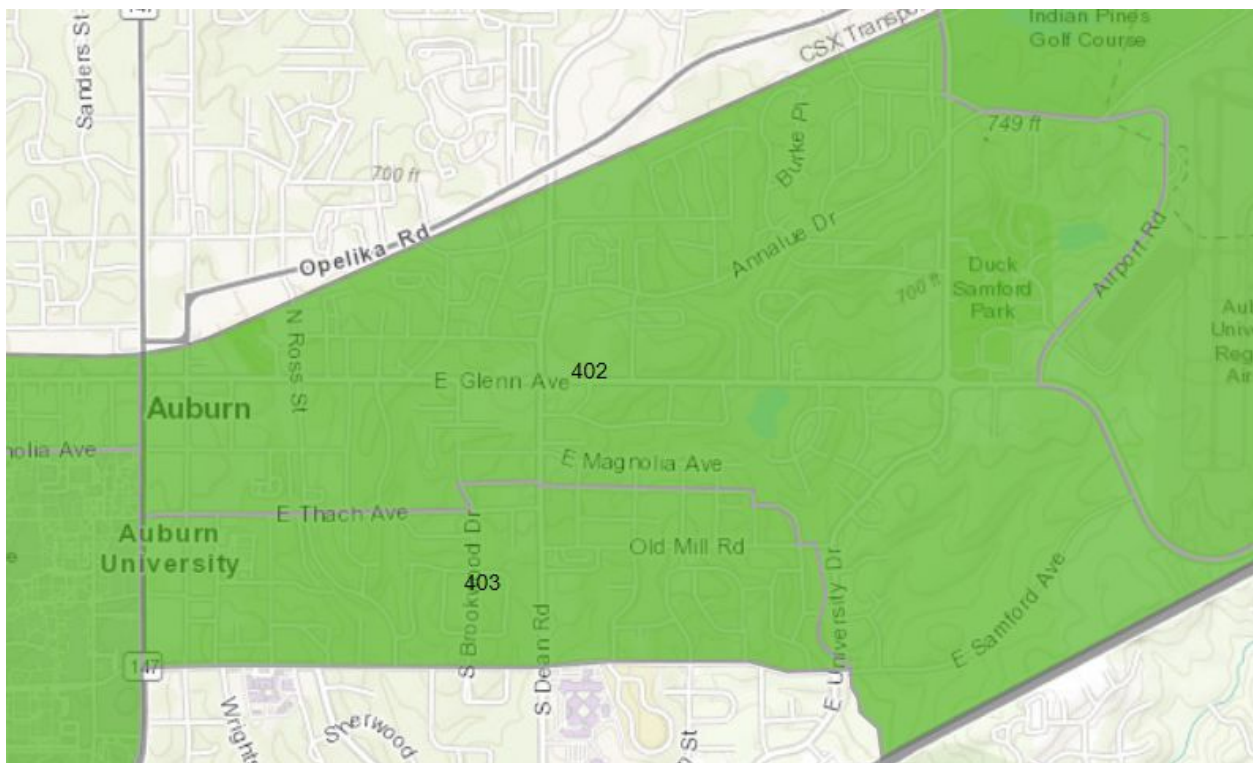
Area: Eastern part of Auburn, next to Auburn University Regional Airport

Total Population: 5,133

Total Housing Units: 2,936

Median Age: 25.4

More Data: <http://www.usboundary.com/Areas/432594>





**Census Tract 01081040300** (Note: 403 on map below)

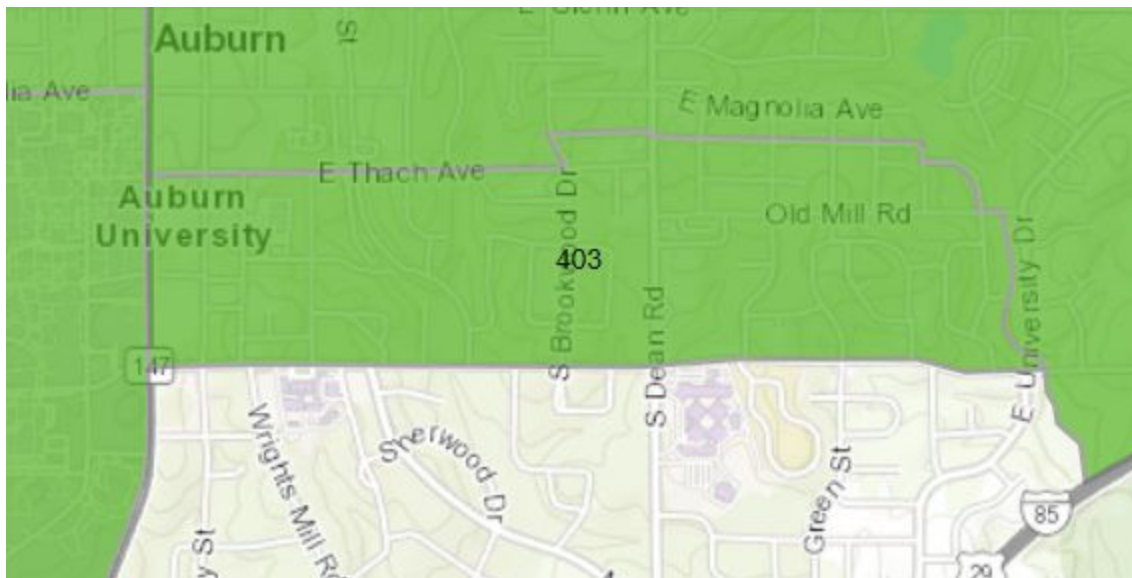
Area: E Samford Ave, S Dean Road

Total Population: 2,470

Total Housing Units: 1,437

Median Age: 23.5

More Data: <http://www.usboundary.com/Areas/432593>



**Census Tract 01081040604** (Note: 406.04 on map below)

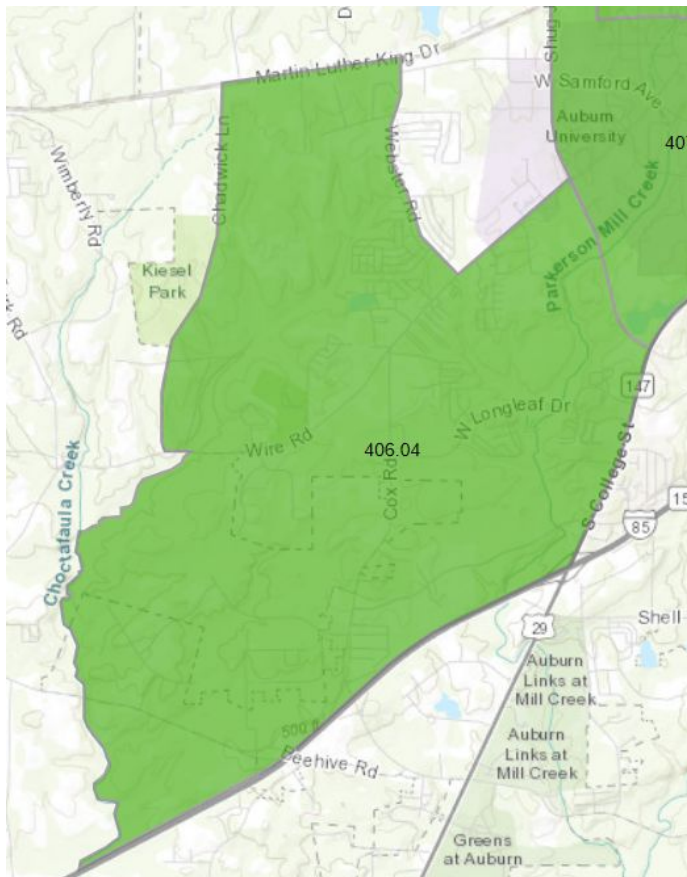
Area: Southwest to Auburn University

Total Population: 5,146

Total Housing Units: 3,081

Median Age: 22.4

More Data: <http://www.usboundary.com/Areas/432563>



**Census Tract 01081040700** (Note: 407 on map below)

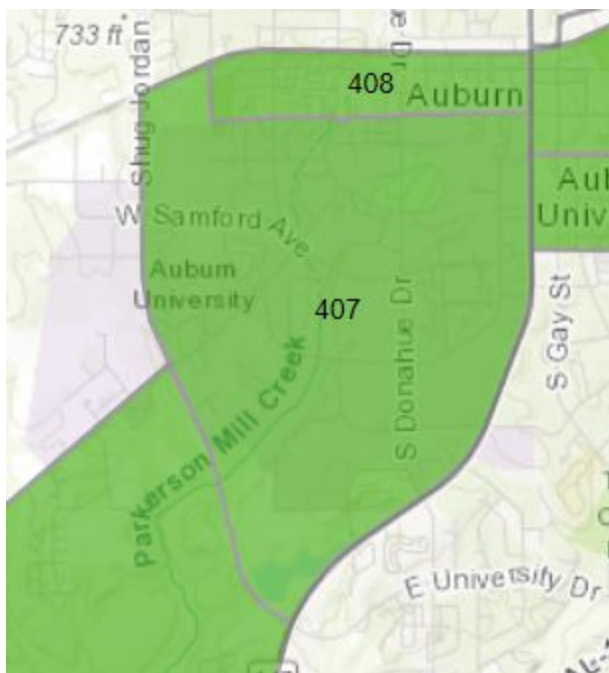
Area: Auburn University

Total Population: 3,977

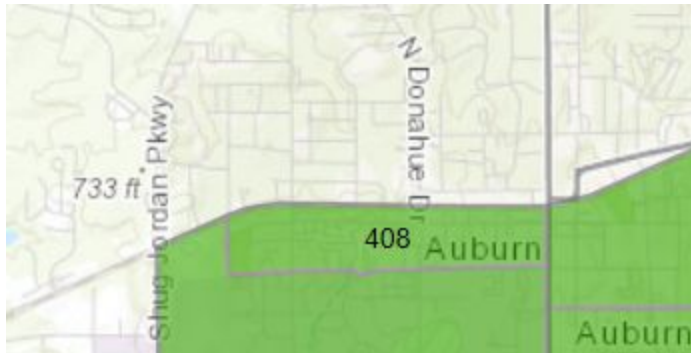
Total Housing Units: 273

Median Age: 19.6

More Data: <http://www.usboundary.com/Areas/432592>



**Census Tract 01081040800** (Note: 408 on map below)  
Area: Logan Square Apartments, part of Toomer's Oaks  
Total Population: 3,750  
Total Housing Units: 2,623  
Median Age: 21.8  
More Data: <http://www.usboundary.com/Areas/432591>





**Census Tract 01081041100** (Note: 411 on map below)

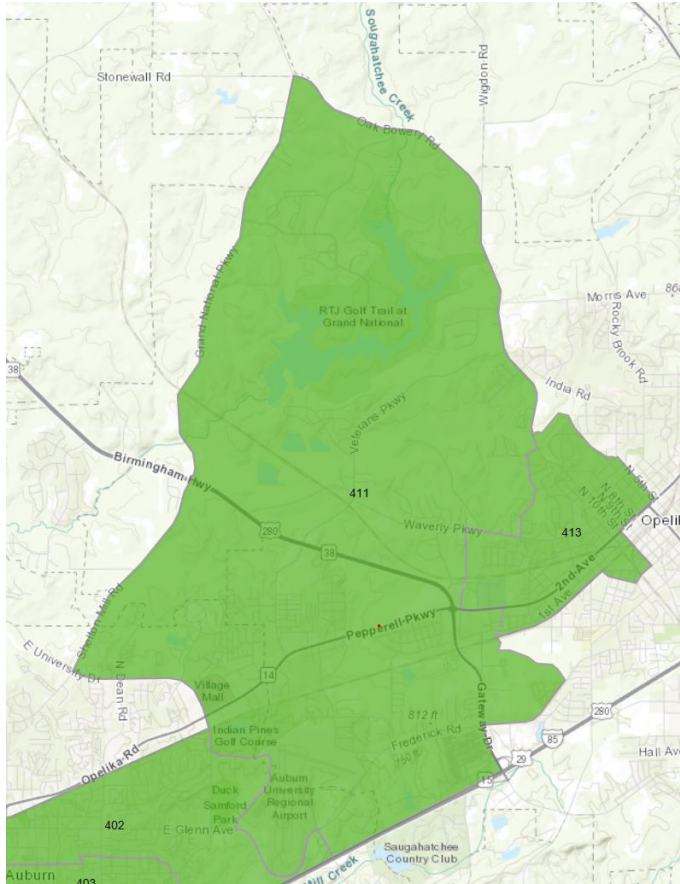
Area: Grand National Golf

Total Population: 9,042

Total Housing Units: 4,210

Median Age: 32.3

More Data: <http://www.usboundary.com/Areas/432597>



**Census Tract 01081041300** (Note: 413 on map below)

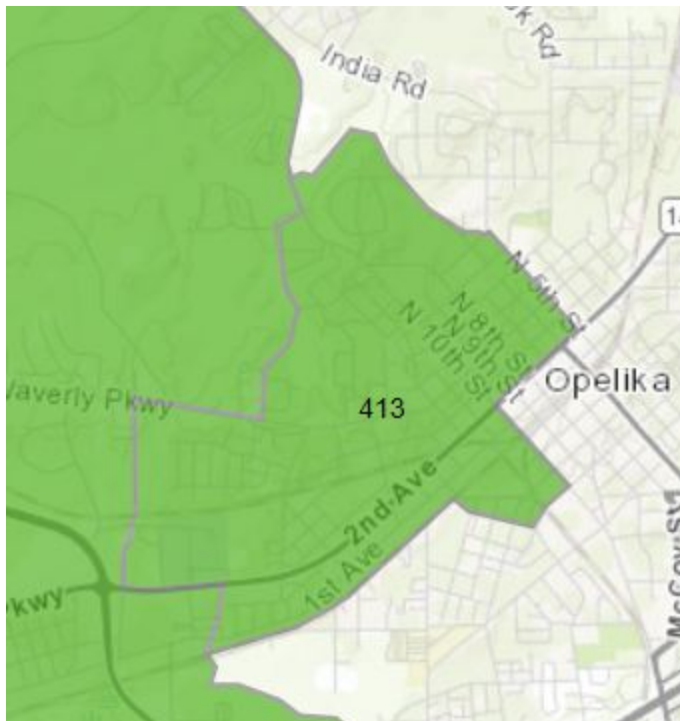
Area: Alta Vista, Westside

Total Population: 3,325

Total Housing Units: 1,468

Median Age: 37.6

More Data: <http://www.usboundary.com/Areas/432590>







## Why Now?

- More than half of America's most economically distressed communities contained both [fewer jobs and businesses in 2015 than they did in 2000](#).
- New business formation is near a record low. The average distressed community saw a [6 percent decline](#) in local businesses during the prime years of the national economic recovery.
- The U.S. economy is increasingly dependent on a handful of places for growth. [Five metro areas](#) produced as many new businesses as the rest of the country combined from 2010 – 2014. (Economic Innovation Group)

“Too many American communities have been left behind by widening geographic disparities and increasingly uneven economic growth. We come from different parties and regions, but share the common conviction that all Americans should have access to economic opportunity [regardless of their zip code](#).”

**Joint Statement from Senator Scott, Senator Booker, Congressman Tiberi, and Congressman Kind, February 2, 2017**